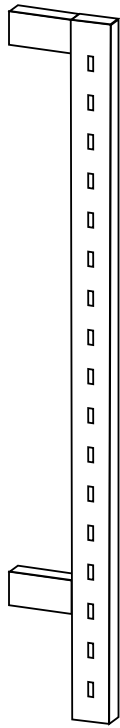




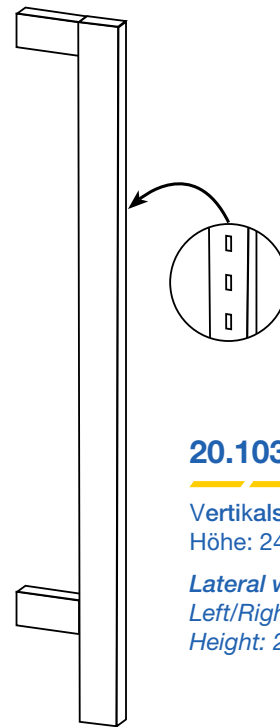
IRON - IRON 2



### 20.101Y/240

Vertikalstange (Mitte)  
Höhe: 240 cm

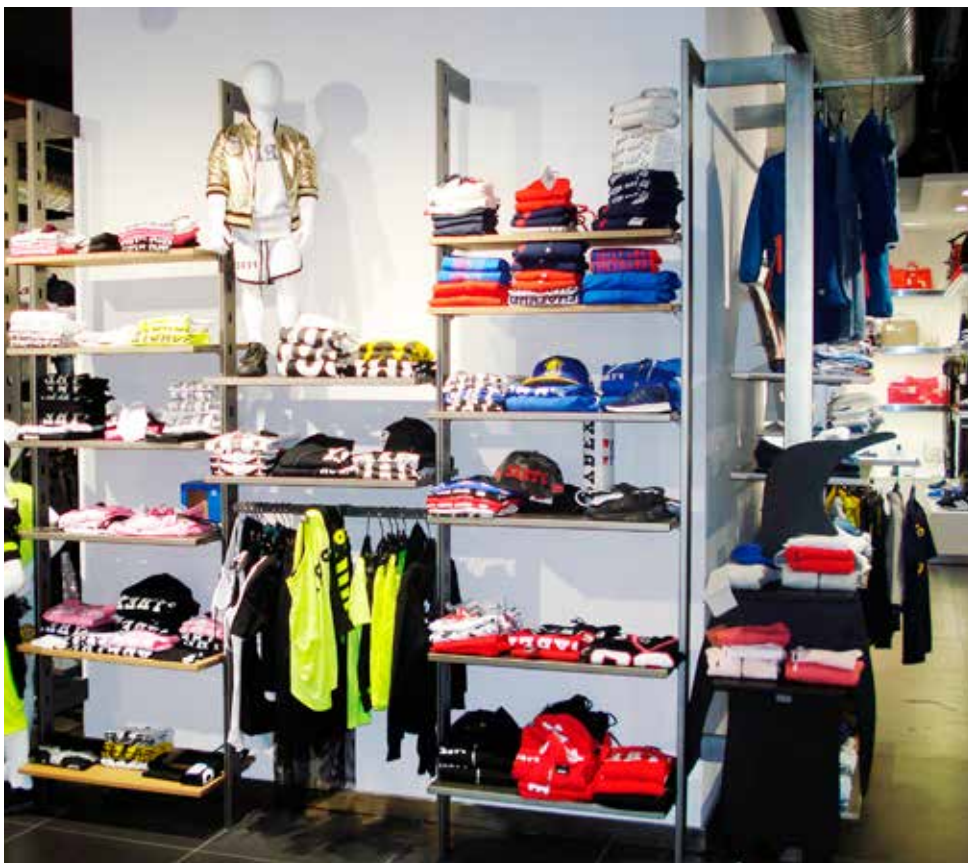
*Central wall upright*  
*Height: 240 cm*



### 20.103Y/240

Vertikalstange (links/rechts)  
Höhe: 240 cm

*Lateral wall upright*  
*Left/Right*  
*Height: 240 cm*



Die Serie Iron wird mit einem  
Rechteckprofil 80x20 mm  
hergestellt.  
Farbe: transparent lackiert

*The Iron system is realized  
by rectangular tube 80x20 mm  
Colour: matt transparent*



## 20.201Y

Basis für Verkaufsgestell (Modul 99 cm)  
Masse: 104 x 47 x H148 cm

*Structure for set of shelves (mod. 99 cm)*  
*Dimensions: 104 x 47 x H148 cm*



## 20.202Y

Basis für Verkaufsgestell doppelt (Modul 99 cm)  
Masse: 207 x 47 x H148 cm

*Double structure for set of shelves, (mod. 99 cm)*  
*Dimensions: 207 x 47 x H148 cm*

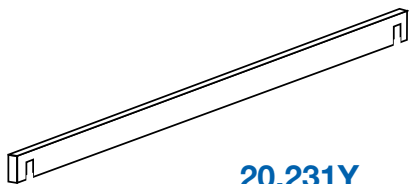


## 20.211T/CEM

Holz-Bodentablar für Verkaufsgestell  
Masse: 100,6 x 47 x 1,9 mm  
Farbe: Zementoptik (Cemento)

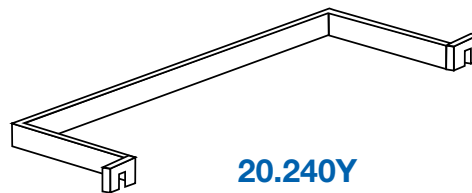
*Wooden base for set of shelves*  
*Dimensions: 100,6 x 47 x 1,9 cm*  
*Colour: concrete*



**20.231Y**

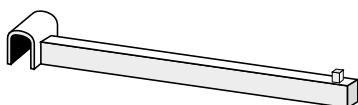
Tragstange  
Länge: 69 - 99 cm

*Hanging bar*  
Length: 69 - 99 cm

**20.240Y**

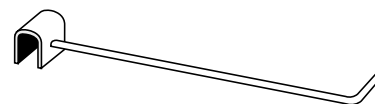
Tragstange frontal  
Länge: 69 - 99 cm

*Front hanging bar*  
Length: 69 - 99 cm

**20.244Y**

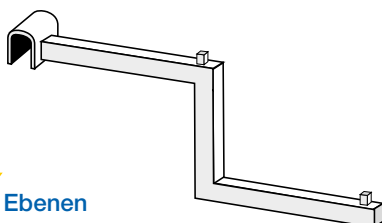
Support frontal  
Länge: 34 cm

*Front support*  
Length: 34 cm

**20.246Y**

Support gerade  
Länge: 25 cm

*Linear hook*  
Length: 25 cm

**20.248Y**

Support frontal mit 2 Ebenen  
Länge: 34 cm

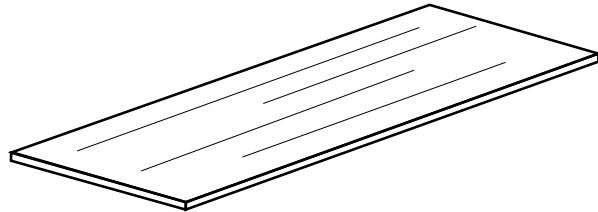
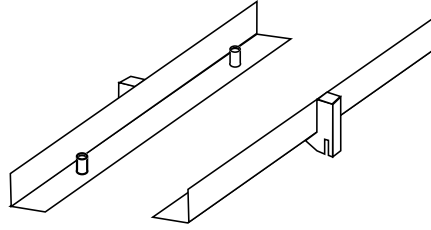
*Front support - 2 levels*  
Length: 34 cm



## 20.250Y

Tablarhalter (Paar)  
Länge: 30 cm  
(für Art. 20.252T / 20.260Y)

*Shelf-holders couple*  
Length: 30 cm  
(for art. 20.252T-20.260Y)



### 20.252T/069CEM

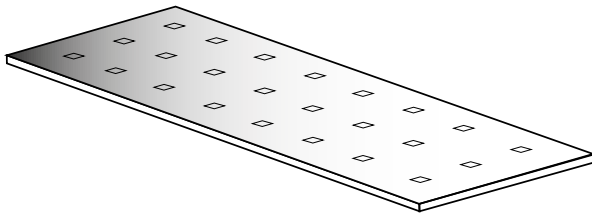
Holztablar mit Befestigungslöcher  
Masse: 69 x 40 x 2,5 cm  
Farbe: Zementoptik (Cemento)

*Wooden shelf with fixing holes*  
Dimensions: 69 x 40 x 2,5 cm  
Colour: concrete

### 20.252T/099CEM

Holztablar mit Befestigungslöcher  
Masse: 99 x 40 x 2,5 cm  
Farbe: Zementoptik (Cemento)

*Wooden shelf with fixing holes*  
Dimensions: 99 x 40 x 2,5 cm  
Colour: concrete



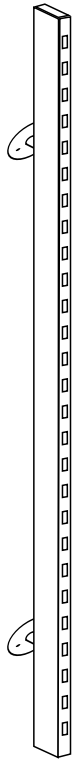
## 20.260Y

Blechtablar mit Befestigungslöcher

Masse: 69 x 40 x 2 cm  
99 x 40 x 2 cm

*Sheet shelf with fixing holes*  
Dimensions: 69 x 40 x 2 cm  
99 x 40 x 2 cm

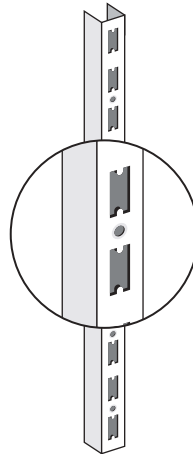


**20.601Y/240****Vertikalstange**

Höhe: 240 cm  
 Profil: 40 x 20 mm  
 (Rasterung 50 mm)

**Wall upright**

Height: 240 cm  
 Tube: 40 x 20 mm  
 (pitch 50 mm)

**35.101Y/240****U-Schiene**

Masse: 30 x 24 mm - Höhe: 240 cm

**Upright for wall**

Dimensions: 30 x 24 mm - Height: 240 cm

**20.611Y****Basis für Verkaufsgestell (Modul 99 cm)**

Masse: 101 x 60 x H148 cm  
 (Rasterung 50 mm)

**Structure for set of shelves (mod. 99 cm)**

Dimensions: 101 x 60 x H148 cm  
 (pitch 50 mm)

**20.612Y****Basis für Verkaufsgestell doppelt (Modul 99 cm)**

Masse: 200 x 60 x H148 cm  
 (Rasterung 50 mm)

**Double structure for set of shelves (mod. 99 cm)**

Dimensions: 200 x 60 x H148 cm  
 (pitch 50 mm)

**20.621T/CEM****Holz-Bodentablar für Verkaufsgondel**

Masse: 97,9 x 60 x 1,9 cm  
 Farbe: Zementoptik (Cemento)

**Wooden base for set of shelves**

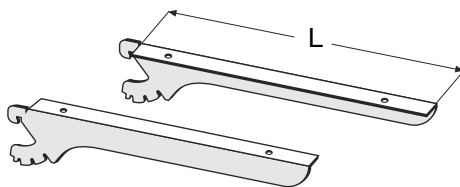
Dimensions: 97,9 x 60 x 1,9 cm  
 Colour: concrete



**20.650Y**

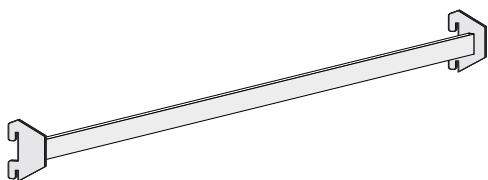
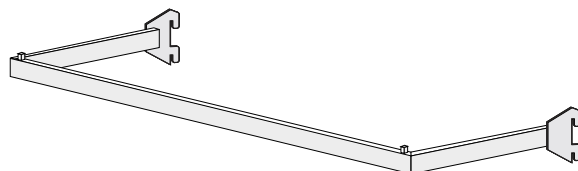
Tablarhalter (Paar)

Länge: 34 cm

*Inclinable shelfholders couple**Length: 34 cm***20.655Y**

Tragstange

Länge: 69 - 99 cm

*Hanging bar**Length: 69 - 99 cm***20.660Y**

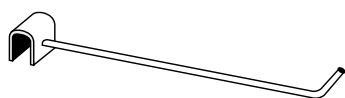
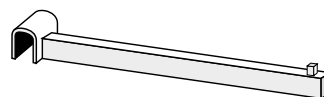
Tragstange frontal

Länge: 69 - 99 cm

*Front hanging bar**Length: 69 - 99 cm***20.664Y**

Support frontal (für Art. 20.660Y)

Länge: 34 cm

*Front support for Art. 20.660**Length: 34 cm***20.666Y**

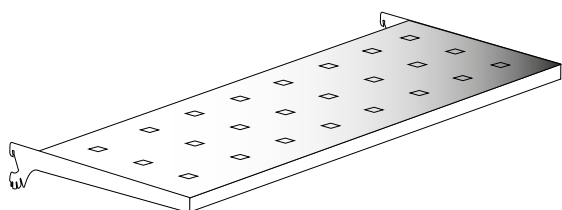
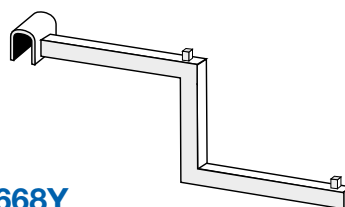
Support gerade (für Art. 20.660Y)

Länge: 25 cm

*Linear hook for Art. 20.660**Length: 25 cm***20.668Y**

Support frontal mit 2 Ebenen (für Art. 20.660Y)

Länge: 34 cm

*Front support - 2 levels for Art. 20.660**Length: 34 cm***20.680Y**

Blechtabor mit Halterungen

Masse: 69 x 40 x 2,5 cm

99 x 40 x 2,5 cm

*Sheet shelf with fixing elements**Dimensions: 69 x 40 x 2,5 cm**99 x 40 x 2,5 cm*





Vertikalstange Iron 2  
*Iron 2 wall uprights*



Verkaufsgestell Iron 2  
*Iron 2 central set of shelves*



### 20.331Y

Aussteller 45 x 45 x H92 cm  
2 Holztablare – Farbe: Zementoptik (Cemento)

Display 45 x 45 x H92 cm  
N. 2 wooden shelves - Colour: concrete





**20.351Y**

Verkaufstisch 110 x 45 x H47 cm  
Holztablar – Farbe: Zementoptik  
(Cemento)

*Display 110 x 45 x H47 cm*  
*Wooden shelf - Colour: concrete*

**20.371Y**

Verkaufstisch 140 x 90 x H80 cm  
Holztablar – Farbe: Zementoptik  
(Cemento)

*Counter 140 x 90 x H80 cm*  
*Wooden shelf - Colour: concrete*

**20.381Y**

Verkaufstisch 110 x 90 x H47 cm  
Holztablar – Farbe: Zementoptik  
(Cemento)

*Counter 110 x 90 x H47 cm*  
*Wooden shelf - Colour: concrete*



Art. 20.371Y + 20.381Y

Art. 20.351Y

## LEGENDE:

C	=	verchromt
H	=	Gold lackiert
T	=	Holz
U	=	Plastik
V	=	Glas
W	=	Spiegel doppelseitig
X	=	lackiert
Y	=	transparent lackiert
Z	=	verzinkt

## LENKROLLEN:

RG	=	Lenkrollen Ø 80 mm
RGF	=	Lenkrollen Ø 80 mm, 2 zum Arretieren
RG100	=	Lenkrollen Ø 100 mm
RGF100	=	Lenkrollen Ø 100 mm, 2 zum Arretieren

## LEGEND:

C	=	<i>chromium-plated</i>
H	=	<i>gold painted</i>
T	=	<i>wood</i>
U	=	<i>plastic</i>
V	=	<i>glass</i>
W	=	<i>mirror on both sides</i>
X	=	<i>painted</i>
Y	=	<i>transparent painted</i>
Z	=	<i>zinc-plated</i>

## CASTORS:

RG	=	<i>big castors Ø 80 mm</i>
RGF	=	<i>big castors Ø 80 mm, two with brake</i>
RG100	=	<i>big castors Ø 100 mm</i>
RGF100	=	<i>big castors Ø 100 mm, two with brake</i>



