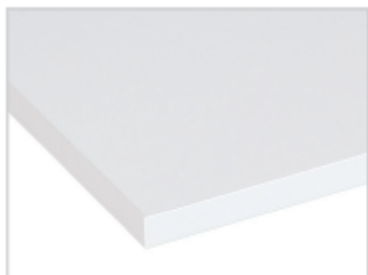




ZUBEHÖR FÜR REGALE  
ACCESSORIES FOR SETS OF SHELVES

## Farbenauswahl - Available colours

Ref. A



Bianco  
White

Ref. E



Bianco lucido  
Bright white

Ref. B



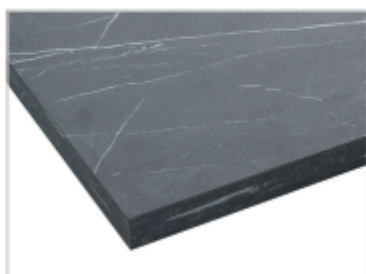
Cemento  
Concrete



Bianco antico  
Old white



Sabbia  
Sand



Marmo grigio  
Marble grey



Grigio venato  
Veined grey

## Zubehör für Möbel - Accessories for furniture



**05280C**

Fuss H 12 cm - Verchromt

Foot H 12 cm - Chromium-plated



**05284X**

Lenkrolle Ø 50 mm mit Flansch

Castor Ø 50 mm with support



**05286X**

Lenkrolle Ø 80 mm mit Flansch

Castor Ø 80 mm with support

BEI BESTELLUNGEN BITTE MASSE UND FARBEN ANGEBEN  
PLEASE INDICATE DIMENSIONS AND COLOUR IN THE ORDER



### 05201T

Holztablar mit ABS-Kante

Masse: 69 x 40 x 2,5 cm  
99 x 40 x 2,5 cm  
119 x 40 x 2,5 cm

*Wooden shelf ABS-edge*

*Dimensions: 69 x 40 x 2,5 cm  
99 x 40 x 2,5 cm  
119 x 40 x 2,5 cm*

### 05230T

Möbel mit grosser Schublade

Masse: 99 x 40 x H 40 cm

*Piece of furniture (1 drawer)*

*Dimensions: 99 x 40 x H 40 cm*



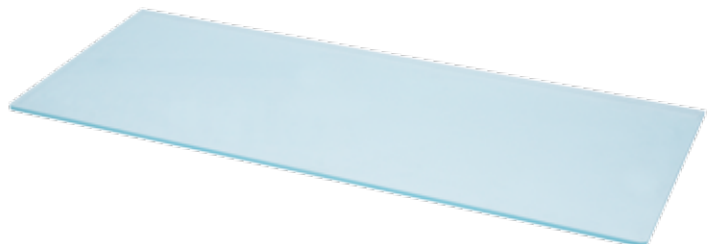
### 05401V

Glastablar matt 8 mm - getempert

Masse: 69 x 40 cm  
99 x 40 cm  
119 x 40 cm

*White glass shelf 8 mm - Tempered*

*Dimensions: 69 x 40 cm  
99 x 40 cm  
119 x 40 cm*





### **05270C - 05270Y**

**Metallrahmen für Podest**

Masse: 69 x 40 x H 10 cm  
99 x 40 x H 10 cm

*Iron frame for base*

*Dimensions: 69 x 40 x H 10 cm  
99 x 40 x H 10 cm*



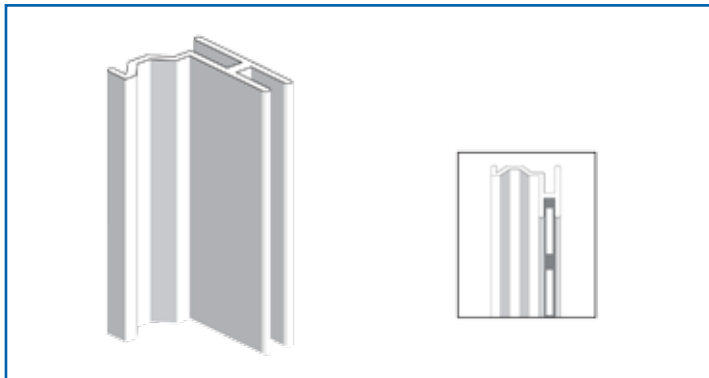
Für das Holztablar siehe Art. 05201T

*For wooden shelf see Art. 05201T*



# PROFILE IN ALUMINIUM

## ALUMINIUM UPRIGHTS



### **75.350X**

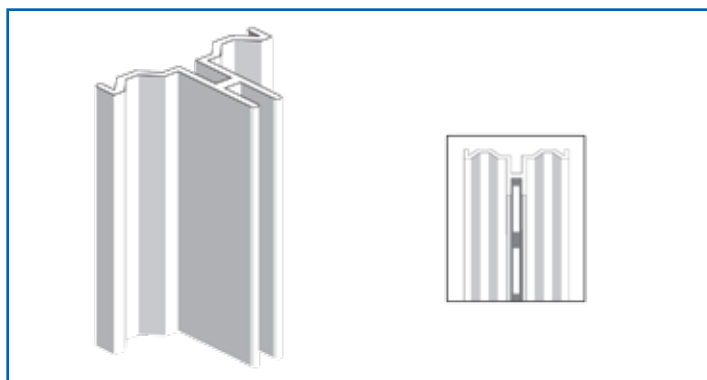
Profil einfach - seitlich  
Höhe: 240 cm  
Aluminium natur

*Single side upright*  
*Height: 240 cm*  
*Natural aluminium*

### **75.352X**

Profil einfach - Mitte  
Höhe: 240 cm  
Aluminium natur

*Single central upright*  
*Height: 240 cm*  
*Natural aluminium*



### **75.354X**

Profil doppelt - Mitte  
Höhe: 240 cm  
Aluminium natur

*Double central upright*  
*Height: 240 cm*  
*Natural aluminium*

### **75.360U**

Befestigungsclip für Holzelemente  
Plastik transparent

*Clip for panel fixing*  
*Transparent plastic*



## LEGENDE:

C	=	verchromt
H	=	Gold lackiert
T	=	Holz
U	=	Plastik
V	=	Glas
W	=	Spiegel doppelseitig
X	=	lackiert
Y	=	transparent lackiert
Z	=	verzinkt

## LENKROLLEN:

RG	=	Lenkrollen Ø 80 mm
RGF	=	Lenkrollen Ø 80 mm, 2 zum Arretieren
RG100	=	Lenkrollen Ø 100 mm
RGF100	=	Lenkrollen Ø 100 mm, 2 zum Arretieren

## LEGEND:

C	=	<i>chromium-plated</i>
H	=	<i>gold painted</i>
T	=	<i>wood</i>
U	=	<i>plastic</i>
V	=	<i>glass</i>
W	=	<i>mirror on both sides</i>
X	=	<i>painted</i>
Y	=	<i>transparent painted</i>
Z	=	<i>zinc-plated</i>

## CASTORS:

RG	=	<i>big castors Ø 80 mm</i>
RGF	=	<i>big castors Ø 80 mm, two with brake</i>
RG100	=	<i>big castors Ø 100 mm</i>
RGF100	=	<i>big castors Ø 100 mm, two with brake</i>



